

# The Pinehurst

*At Northwoods*



The Pinehurst

5 Bed - 3 Bath

2392 sqft

**Exterior:**

High Quality Exterior  
Low Maintenance Hardie Lap and Board & Batten  
30-Year Dimensional Architectural Roof Shingles  
Covered Back Porch  
Single Hung, Double Pane High Efficiency Low E Glass Vinyl Windows  
Sodded Lot using 7 pallets of Zoysia Grass & 3 zones of irrigation  
2 Car Garage  
8x8 Columns with Large Corbels on Front Porch  
6x6 Columns on Back Porch

**Building Standards:**

Slab on Grade Concrete Foundation  
Traditional Stick Framing Methods  
Framed "Green Corners" for higher Energy Efficiency

**Interior Features:**

9' Ceilings throughout  
Traditional R13 Batt/Fiberglass Insulation  
Open Cell R20 Spray Foam Installed on Roof Deck  
50 Gallon Electric Water Heater  
16 SEER Electric Heat Pump  
Chorus Smart Home Security System

**Interior Finishes:**

5" Hand Scraped Pre-Engineered Hardwood Flooring in the Common Areas on Main Floor  
Carpet in all Bedrooms & Upstairs Common Areas  
Ceramic tile flooring in all Full Bathrooms  
Custom Designed Wooden Cabinets in Kitchen & Bathrooms  
Granite countertops throughout  
Stainless Steel Appliances by Whirlpool®, including the Dishwasher, Glass Top Electric Range & Microwave  
Delta® Kitchen and Bath Fixtures  
Double Vanity in Master Bathroom with Under-mount sinks  
Vanity Mirrors  
Schluter Shower system with Delta fixtures & full tile surround with a semi-frameless glass shower door in Master Bathroom  
Soaking Garden Tub in Master Bathroom  
Low Maintenance High Quality Fiberglass Tub/ Shower in all other Full Bathrooms  
Recessed Lighting throughout Kitchen, Living Room & Master Bedroom  
Wire Shelving installed in all Closets, Pantry & Laundry Areas  
Interior walls primed & painted with Sherwin Williams® products. Includes two wall colors, one trim color & one ceiling color  
6" Baseboards throughout  
Ventless Electric Log Fireplace  
A 5' tall brick surround and hearth will be installed with cedar 6x12 mantel with corbels. 1x6 Shiplap, painted to match trim color will extend to ceiling.  
Judges Paneling in Family Dining and Foyer  
Barn door installed from Kitchen to Pantry per plans

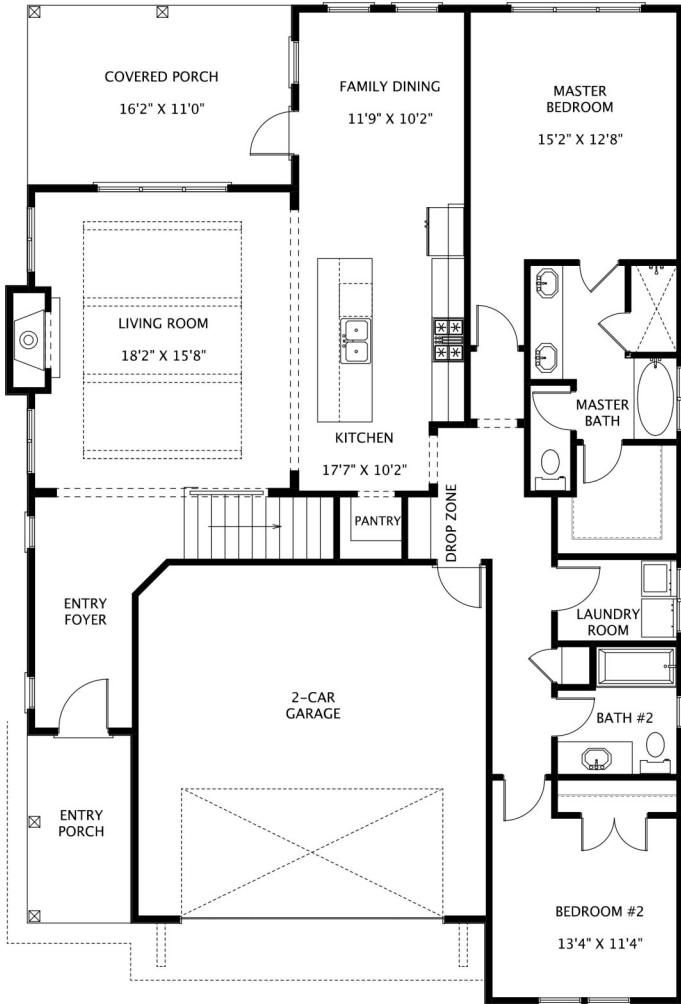
**Upgraded Finish Options:**

Farmhouse Sink	\$1,250
Under Cabinet Lighting	\$1,200
2" White Faux Wood Blinds throughout door	\$69 per window/door
Window Screens (on all operable windows)	\$32 per window
Solid Core Doors throughout	\$1,700
Floor Outlet	\$500 per
USB Outlet	\$50 per
Surround Sound	\$3,250
(Includes 5 ceiling speakers, 1 sub woofer (floor standing), 5 channel audio-video receiver/amplifier & 1 Control4 entertainment controller with remote)	
Music Package	\$1,000 per room
(Includes 2 in ceiling speakers and one zone amp with wireless remote control via smart phone or tablet app, requires WiFi)	
Marble Countertops	Price Available Upon Request
Heated Tile Floors	Price Available Upon Request
Brick Accent Wall	Price Available Upon Request

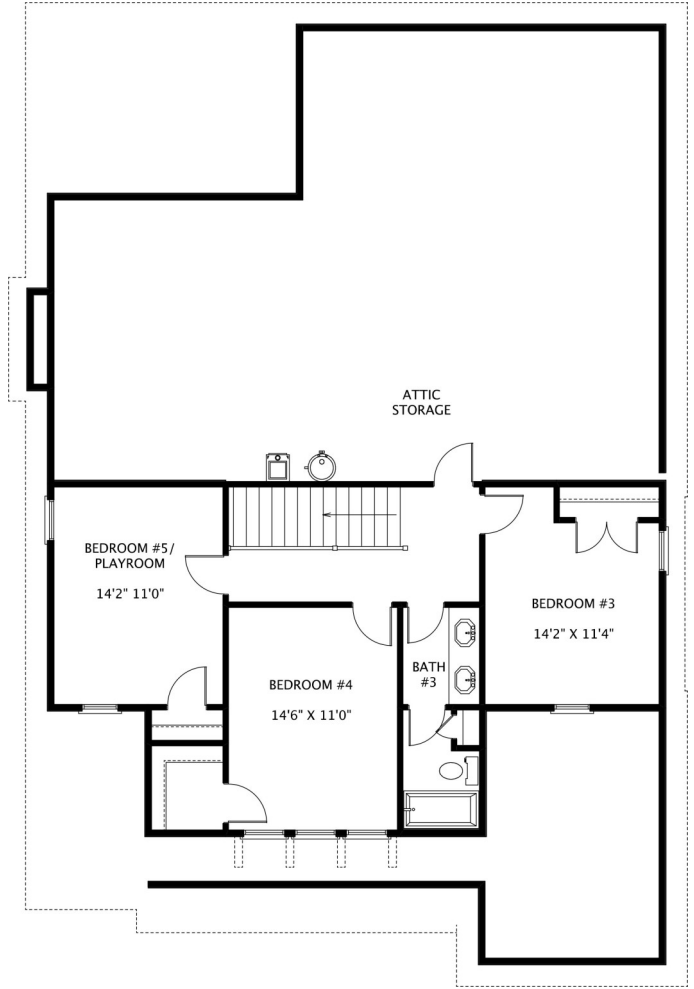
C i hXccf: fYd'UW'fBUW'Dc:fWL  
~%& \$S  
5 Vf]W'g ffc i bX'UbX\`YU'h k ]~'VY']bgU'YXU~  
hYk Untc'h'YW']b[ 'k ]h UW'dfYgg\*1%&a UbhY'  
k ]h WfVYg'6f]W'k ]~'a UW'Y'hY]cf Vf]W'  
gY'W]cb"< YU'h k ]~'VY%&fH~'1 %&fHXYd"K f]b[ 'Zf'  
HJ 'Uvcj Y'a Ubh'"

**Smart Home Package:**

Equipped with the standard Northwoods Smart Home Package "Peace of Mind" which includes: 5 smart outlets, 2 garage door controllers, 1 Alexa, 1 Alexa Echo Dot, 4 smart switches, 3 lamp modules, 1 smart panel, 1 door bell camera, 2 smart door locks, 1 smart thermostat, 1 carbon monoxide detector, first floor door and window sensors, 1 outdoor camera, 2 motion detectors, 1 firefighter device, 1 indoor camera, 2 flood sensors & 1 smart drive. May vary depending on floor plan..



Main Level



Upper Level



# NORTHWOODS



"Building Reputations"

[www.HollandHomesllc.com](http://www.HollandHomesllc.com)

**(334) 332-7157**

THE ELEVATION AND FLOOR PLANS CONTAINED HEREIN ARE NOT TO SCALE AND ARE GRAPHIC ILLUSTRATIONS FOR MARKETING AND PRESENTATION PURPOSES ONLY. ACTUAL FLOOR PLANS AND ALL MATERIALS MAY VARY PRIOR TO OR DURING CONSTRUCTION. SOME FEATURES SHOWN MAY BE OPTIONAL. HOLLAND HOMES RESERVES THE RIGHT TO SUBSTITUTE MATERIALS AND COMPONENTS OF SIMILAR QUALITY, AND TO CHANGE FEATURES, OPTIONS, AND ARCHITECTURAL DETAILS WITHOUT PRIOR NOTICE. ACCORDINGLY, NEITHER THESE MATERIALS, NOR ANY COMMUNICATION MADE OR GIVEN IN CONNECTION WITH THESE MATERIALS, MAY BE DEEMED TO CONSTITUTE ANY REPRESENTATION OF WARRANTY, CONTRACT OR GUARANTEE OR MAY OTHERWISE BE RELIED UPON BY ANY PERSON OR ENTITY UNLESS CONVEYED IN WRITTEN FORM. THIS MARKETING INFORMATION AND PLAN ARE PROPERTY OF HOLLAND HOMES.